

XP BRIEF: ROM Update Procedure

Contact: inquiries@janam.com

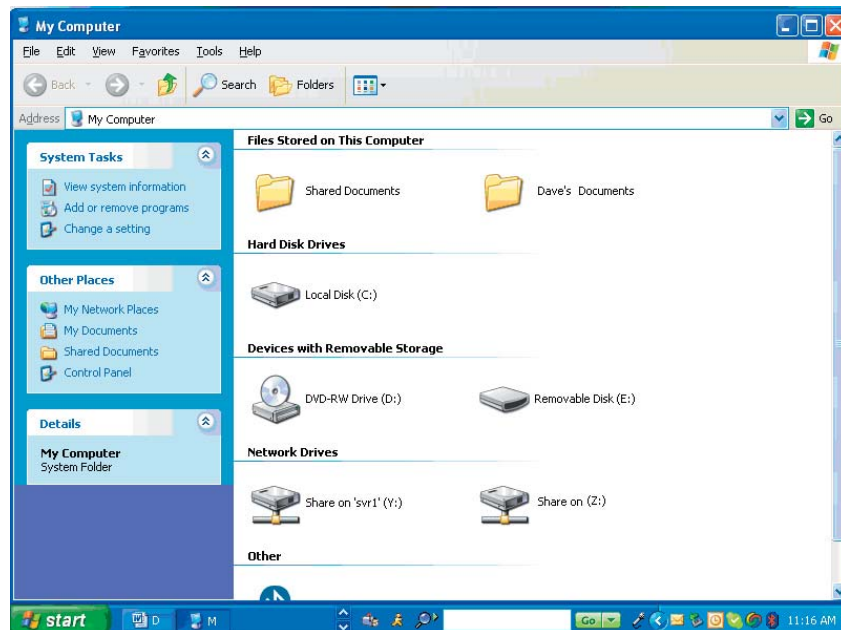
How to Check ROM Version:

Select the Memo Pad application on a Janam XP unit. Select "New". Write the symbols for "shortcut dot 9" (ⓧ.9) in the numeric section of the graffiti pad. Your unit's ROM build date and time will be displayed.

How to Update the ROM:

Note: This is a destructive process and ALL applications and data will be DELETED. Please be sure you are properly backed up before starting the process.

1. Remove battery door from unit.
2. Place fully charged battery into device. Unit will power up.
3. Press and hold the right trigger button while you press and release the reset button. You MUST KEEP right trigger button pressed until "USB" appears on the screen.
4. When the USB screen appears, release the right trigger button.
5. Attach the USB synchronization/charging cable to the bottom of the XP Series device. Note "TOP" marked on the connector of the cable.
6. Connect other end of cable to a USB port of PC. A removable drive will appear in "My Computer" on PC. In the screenshot below, it appears as "Removable Disk (E:)".



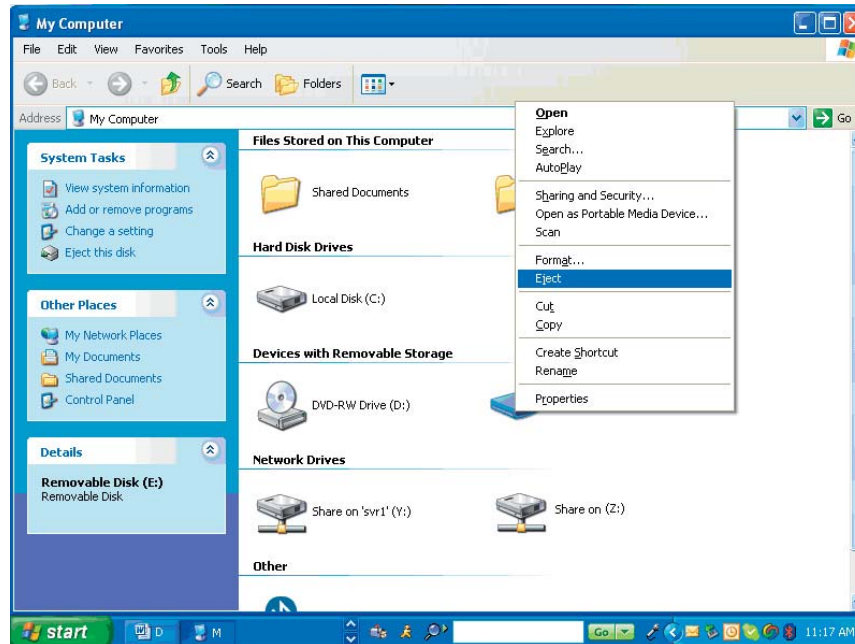
XP BRIEF: ROM Update Procedure

Contact: inquiries@janam.com

7. Locate the appropriate ROM BIN file that you downloaded from Janam's Partnerzone (<http://www.janam.com/partner-login.php>). Copy the ROM BIN file to the drive window that opened when you connected the XP Series device to the PC.

*****CAUTION***** Make certain that you use the correct ROM BIN file for your beta device. If you use the ROM BIN file for an XP20 on an XP30, or vice-versa, the unit will fail to boot up. If you have any questions about this, please contact inquiries@janam.com or call +1.877.JANAM.99 Ext. 25.

8. Go to the "My Computer" screen on your PC. Select the drive that appeared when the cable was attached by left-clicking on it. Then, right-click to obtain the pull-down menu. From the pull-down menu, click on "eject".



9. DO NOT DISCONNECT CABLE FROM PC OR DEVICE. Device will start to boot up about 10 seconds after the drive is ejected. Wait for device to fully power down. Now disconnect the synchronization cable.

XP BRIEF: ROM Update Procedure

Contact: inquiries@janam.com

10. Perform a hard reset on the device by following these steps:
 - a) Locate the power button on the top of the device.
 - b) While holding down the power button, gently press the reset button with the tip of the stylus.
(The reset button is in a small hole located at the lower left-hand corner below the battery on the back of the device.)
 - c) Release the reset button.
 - d) Watch the screen and when the Palm Powered logo appears, release the power button.
 - e) When a message displays on the device screen warning that you are about to erase all the data, press the up or down key to erase.
 - f) The new ROM will then be loaded into your Janam XP Series unit.
 - g) Reinstall the battery door.
 - h) Check the ROM version again. The updated ROM build date and time should appear.